

**SOUTHERN WESLEYAN** university



**ALUMNI** *program of work*  
**2010-2011**

**SOUTHERN  
WESLEYAN  
UNIVERSITY**



# *Southern Wesleyan University* **Mission**

Southern Wesleyan University's mission is to help men and women become all God intends them to be through an excellent learning experience that promotes intellectual inquiry, fosters spiritual maturity, equips for service, and mobilizes leaders whose lives transform their world through faith, knowledge, love, and hope as they serve Jesus Christ and others.

## *Our Alumni Association Mission*

The overall mission of the Alumni Association is to support enthusiastic and informed ambassadors for the university through service, involvement, and effective communication.

## *Our Alumni Association Purpose*

The purpose of the SWU Alumni Association is to geographically coordinate efforts of SWU alumni and friends, encourage support of SWU, foster association of former students, and promote SWU within one's community, while providing leadership in support of SWU.

*Dear Southern Wesleyan University Alumni and Friends,*

The Alumni Association exists to serve and represent you so that your experience while attending Southern Wesleyan University continues to be a positive one throughout your life. In the days ahead we will continue to promote a positive attitude through our active alumni in all of our regions where alumni live, work and serve. We will continue to find ways to create more value for your alumni membership. By 2011, the alumni board agrees to expand the board and invite up to 75 members to serve our more than 14,000-member alumni body. We continue to search for our alumni across the nation to serve on this leadership team. This document serves as an annual blueprint for the programs, services, and the value the Association provides for its members. Association President Janene Bryson will lead the National Alumni Board holding each committee to the accountability needed to get the job done. With the efforts of the alumni board working with the Southern Wesleyan University staff, the vision for the days ahead is bright. Assessment of each goal will be easy to track as the goals are set forth in this Program of Work along with the previous year's progress report.

The input and participation of all Southern Wesleyan University alumni are vital to the success of the Program of Work. We invite you to look for opportunities to become involved in the activities that matter most to you and your family. This is your association. Plan now to leave your mark on the heritage of SWU!

Serving with passion,

*Joy Bryant*

Joy Bryant  
Executive Director of Alumni and Constituent Relations



## 2010-2012 Executive Committee

The Executive Committee shall be a Standing Committee of the Association. The Executive Committee shall consist of the President, the President-elect, the Immediate Past-president, and the Executive Director of Alumni Relations. The duties and responsibilities of the Executive Committee shall be as follows:

1. To make recommendations to the National Board of Directors concerning Association policies, programs and activities;
2. To manage the affairs of the Association between meetings of the National Board of Directors;
3. To meet at the call of the President and/or the Executive Director of Alumni Relations as may be necessary and convenient for the performance of the Executive Committee's duties; and
4. To exercise such additional powers as may be delegated to it from time to time by the National Board of Directors.

### Past President: Sue Rickman

The Immediate Past-president:

- Shall preside over meetings in the absence of the President and President-elect and shall perform such other duties as are delegated by the President.

### President: Janene Bryson

The President:

- Shall preside over all meetings of the Association, the Board of Directors and the Executive Committee.
- Shall appoint all committees and committee chairs not otherwise provided for in the Constitution or By-laws.
- Shall be an ex-officio member of all committees and shall serve as the official representative of the Association to the SWU Board of Trustees. (This duty goes into effect when the Alumni Board has reached 75 members.)
- Shall in conjunction with the Executive Director of Alumni Relations develop the agenda for the National Board of Directors' meetings.
- Shall represent the SWU Alumni Association at appropriate community events.
- Shall assist in developing a specific and measurable Program of Work by October of each year.
- Shall review progress toward achieving the goals in the Program of Work with vice-chairs in February and April of each year.

### President-elect: Dr. Cory Williams

The President-elect:

- Shall serve as chair of the Nomination Committee, shall preside over meetings in the absence or at the direction of the President and shall perform such other duties as are delegated by the President.

### Executive Director of Alumni and Constituent Relations (Treasurer): Joy Bryant

The Executive Director of Alumni and Constituent Relations

- Shall keep accurate records of all financial matters.
- Shall ensure that all goals in this document are S.M.A.R.T. goals (Specific, Measurable, Attainable, Realistic and Trackable).
- Shall ensure that those placed in leadership roles have the appropriate skills to support the achievement of the Program of Work.



## Alumni Relations Committee:

**Purpose:** To establish and build relationships with all Southern Wesleyan alumni.

The goal is to build a functioning organization that can carry out alumni development projects which include the development of the alumni organization on each district, learning center and affinity group.

The Alumni Association National Board of Directors shall consist of the President, the President-elect, the Immediate Past-president, the Southern Wesleyan University Executive Director of Alumni Relations, a representative from each area listed in the chart below with no more than 75 directors total. The National Board of Directors should include, where practical, representation from all age groups of alumni, the different institutions whose alumni comprise the membership of the Association, the various degree programs of the university, the different geographic regions where alumni are located, and the various professions in which alumni work. An ex-officio non-voting member of the Board of Directors shall be the SWU President. The Executive Committee may, from time to time, invite the then-current student body president of the university to appoint one or more students to serve as representatives to the Board of Directors, the number of such representatives and their appointment to be determined by the Executive Committee.

Type	Area Representatives	Goal	Desired Results by 2011	Results as of 2010 Total and %
5 AGS Learning Center Areas	Central	Representatives from each AGS location. Prefer graduates but current AGS students can serve upon approval.	5	3 60%
	Greenville <small>(includes Spartanburg and Greenwood)</small>		5	5 100%
	Columbia		5	5 100%
	North Augusta		5	1 20%
	Charleston		5	4 80%
Traditional		Graduates from the traditional program.	5	3 60%
7 Geographic Areas	South Carolina	Graduates from SWU residing in these geographic areas. Wesleyans and Non-Wesleyans from these areas, all must be graduates.	5	5 100%
	NC West		5	3 60%
	NC East		5	0 0%
	Florida		4	0 0%
	Tennessee		4	0 0%
	South Coastal		4	3 75%
	Shenandoah		4	0 0%
3 SWU Schools and Colleges	School of Business	Graduates from each of the schools or colleges.	1	1 100%
	School of Education		1	1 100%
	College of Arts and Science		1	1 100%
Different institutions whose alumni comprise the membership of the SWU Alumni Association	Kernersville	Members of the Kernersville Academy and the Wesleyan Methodist College and High School Academy as well as members that have been given honorary status such as SWU employees	4	2 50%
	Wesleyan Academy High School WMC/CWC/SWU			
	Honorary Alumni			
At-Large National		Representatives from geographic areas outside of the Wesleyan Districts assigned to SWU.	3	3 100%
Affinity Chapters	Fine Arts, Athletics, or other SWU affinity groups	Representatives from affinity chapters.	4	1 25%
Totals			75	41 54%

## 2009-2010 Progress Update: Alumni Association Board of Directors

Goal: Increase the size of the Alumni Association Board of Directors by October 2010

Type	Area Representatives	Member List	Desired Results by 2011	As of July 2010 Total and %
5 AGS Learning Center Areas	Central	Lisa McKinney-CE	25	18 72%
	Greenville (includes Spartanburg and Greenwood)	Sammy Stewart-CE		
	Columbia	Julie Kellett-CE		
	North Augusta	Mark Thompson-GR		
	Charleston	Teresa Thurmond-GR		
		Tracy Landrith-GR		
		Natalie Carey-GR		
		Osie Egbuniewe-GR		
		Jennifer Potts-CO		
		Harold Reaves-CO		
		Karen Varnadoe-CO		
		Lisa Jenkins-CO		
		Roger Lambkin-CO		
		Kathryn Linnenkohl-NA		
		Cassandra Rice-CH		
		Danielle Hardy-CH		
		Rebecca Lester-CH		
		Joel Crawford-CH		
Traditional		Tim Elrod	5	3 60%
		Sue Rickman		
		Kelley Norwine		
7 Geographic Areas	South Carolina	Joy Bryant-SC	31	11 35%
	North Carolina East	Bob Nash-SC		
	North Carolina West	Todd Price-SC		
	Florida	Corey Williams-SC		
	Tennessee	Lisa Bryant-SC		
	South Coastal	Janene Bryson-NC		
	Shenandoah	Darl Fowler-NC		
	Janet Green-NC			
	Sonny Lusk-GA			
	Karen Watts-AL			
		Jonathan Watts-AL		
3 SWU Schools and Colleges	School of Business	Brian Swords	1	1 100%
	School of Education	Nancy Edwards	1	1 100%
	College of Arts and Science	Lewis Edwards	1	1 100%
Different institutions whose alumni comprise the membership of the SWU Alumni Association	Kernersville	Billie Faye Harvey Winnie Molloseau	4	2 50%
	Wesleyan Academy High School WMC/CWC/SWU			
	Honorary Alumni			
At-Large National		Priscilla Hammond Michael Nunley Deborah Rhodes	3	3 100%
Affinity Chapters	Fine Arts, Athletics, or other SWU affinity groups	Dan Wood	4	1 25%
16 members Term Expires		7 members rolled off 9 approved for three more years.	16 members	9 56%
Implementation of Alpha Sigma Lambda	Awareness	Result exceeded expectation: Inducted 44 members to ASL chapter. Raised over \$2000 to cover the ongoing cost of chapter		
Summary	Expectations have exceeded the 2010, 30% benchmark for filling board seats. As of July 15, 2010, 54% of the 75 member board has been appointed. Alpha Sigma Lambda awareness results exceeded the expectation for the year with press release and 7 induction ceremonies.			

## 2010-2011 Project Goals: Alumni Association Board of Directors

Goal: To reach full capacity of the Alumni Association National Board of Directors to 75 members. Due to redirection from university administration all board members shall be in place by July 2011. The Association is to identify, engage, involve and build alumni leadership as a strong and active organization that will actively help the university achieve its goals, which of necessity, will involve, increased levels of alumni giving annually to the promise fund campaign.

Strategies: Recruit members for the following areas:	Desired Results
5 AGS Learning Center Areas	25 total members
Traditional	5 total members
7 Geographic Areas	35 total members
3 SWU Schools and Colleges	3 total members
Different institutions whose alumni comprise the membership of the Association	4 total members
At-Large National	3 total members
Affinity Chapters	4 total members
Term Expires	Replace or roll membership for three years for 15 members.
Assess site location representation	Include site coordinator where feasible for leadership roles.
75 members of the alumni giving annually to the Promise Fund	<b>Each board member to contribute to the 100+ campaign</b> New donors consider \$12 per month= \$144 per year Second year leaders \$24 per month = \$288 per year Third year term leaders \$36 per month = \$432 per year Tenure members \$41.66 per month = \$500 per year
Alpha Sigma Lambda (ASL)	Host an induction for 2011 and conduct quarterly meetings with Omicron Sigma chapter of ASL.

### National Alumni Board of Directors

In case of a vacancy caused by resignation, death, disability or removal of a Director, a majority of the remaining Directors shall select any member of the Association to fill the vacancy for the remainder of the term. Directors are expected to attend all regular and special meetings of the Board. Any Director who fails to attend three consecutive such meetings shall be deemed to have resigned at the third such meeting, and shall be subject to replacement as set forth above. A Director may be removed for just cause, as determined by a two-thirds majority of the Board of Directors, and shall be subject to replacement as set forth above.

The National Board of Directors shall meet at least **three times** annually in regular session and for any special sessions as called by the Association President.

- Friday afternoon preceding Homecoming Weekend (typically held in the month of September) at 3:30 p.m.
- First Saturday of February at 9:30 a.m.
- Second Thursday in April at 2:30 p.m.
- Directors are also encouraged to participate in all appropriate Association activities annually. Each regular and special meeting of the National Board of Directors shall follow a written agenda, prepared by the Executive Committee, describing the subjects of discussion. Any other matters may be placed on the agenda by the Association President or by any two members of the Board of Directors three days preceding any regular meeting. The members present at a regular or special meeting shall constitute a quorum.
- Expectation of the National Alumni Board is to make an annual gift to the Promise Fund.

#### **Each board member to contribute to the 100+ campaign**

##### Recommendation for Annual Giving

New members consider \$12 per month	\$144 per year
Second year leaders \$24 per month	\$288 per year
Third year term leaders \$36 per month	\$432 per year
Tenure members \$41.66 per month	\$500 per year

<b>Name</b>	<b>Year First Elected</b>	<b>Term Expires</b>
David Spittal (non-voting) SWU President Central, SC	1994	Ex-officio
<b>CENTRAL LEARNING CENTER AREA *</b>		
Julie Kellett '07 Liberty, SC	2009	2012
Sammy Stewart '09 Easley, SC	2009	2012
Lisa McKinney '10 Pickens, SC	2010	2013
<b>GREENVILLE LEARNING CENTER AREA</b>		
Teresa Thurmond '02 Greenville, SC	2005	2011
Osie O. Egbuniwe '82 Greenville, SC	2008	2011
Mark A. Thompson (student) Greenville, SC	2008	2011
Natalie Carey '09 Easley, SC	2008	2011
Tracy Landrith '06 & '09 Pelzer, SC	2009	2012
<b>COLUMBIA LEARNING CENTER AREA</b>		
Karen Varnadoe '10 Lexington, SC	2008	2011
Jennifer Potts '05 Columbia SC	2008	2011
Harold Reaves '07 Columbia SC	2008	2011
Lisa Jenkins (student) Columbia SC	2008	2011
Roger Lampkin '03 & '10 Elgin, SC	2010	2013
<b>NORTH AUGUSTA LEARNING CENTER AREA *</b>		
Kathryn (Kathy) Linnenkohl '08 Martinez, GA	2009	2012

**CHARLESTON LEARNING CENTER AREA \***

Rebecca Lester (student)  
Summerville, SC 2008 2011

Cassandra Rice '07 & '10  
Summerville, SC 2010 2013

Danielle Hardy '08  
North Charleston, SC 2010 2013

Joel Crawford '06  
Moncks Corner, SC 2010 2013

**TRADITIONAL\***

Sue Rickman '68  
Clemson, SC 1975 2012  
Alumni Association Past-President

Tim Elrod '02  
Liberty, SC 2007 2010

Kelley Norwine '82 & '90  
Easley, SC 2010 2013

**SOUTH CAROLINA**

Cory Williams '94  
Anderson, SC 2007 2010  
Alumni Association President-Elect

Lisa Bryant '93  
Easley, SC 2000 2011

Bob Nash '61  
Central, SC 1975 2010

Todd Price '07  
Anderson, SC 2008 2011

Joy Bryant '92 & '04  
Central, SC 2001 Ex-officio  
Executive Director Alumni Relations: Treasurer

**North Carolina West \***

Janet Green '62  
Gastonia, NC 1998 2010

Darl Fowler '53  
Greensboro, NC 1965 2009

Janene Bryson '75  
Brevard, NC 2008 2014  
Alumni Association President

**North Carolina East \***

**FLORIDA \***

**TENNESSEE \***

**SOUTH COASTAL \***

C.W. Lusk '56 2000 2011  
Kennesaw, GA

Karen Watts '74 2010 2013  
Albertville, AL

**SHENANDOAH \***

**SCHOOL OF EDUCATION**

Nancy Edwards '72 2002 2010  
Liberty, SC

**SCHOOL OF BUSINESS**

Brian Swords '95 2010 2013  
Liberty, SC

**COLLEGE OF ARTS AND SCIENCE**

Lewis Edwards '70 1975 2009  
Liberty, SC

**KERNERSVILLE - WESLEYAN ACADEMY- HIGH SCHOOL  
SWU EMPLOYEES AND HONORARY ALUMNI\***

Winnie Molloseau 2008 2011  
Central, SC  
Alumni Association Secretary

Billie Faye Harvey H.S., Jr. College, CWC '89 1988 2009  
Central, SC

**AT LARGE**

Priscilla Hammond '06 2007 2010  
San Diego, CA

Deborah Kelley Rhodes '04 2008 2011  
Noblesville, IN

Michael Nunley '04 2008 2011  
Bronx, NY

**AFFINITY GROUPS \***

\*There are open positions on the Alumni Board from these areas.

## Awards Committee

**Purpose:** To identify and recognize alumni who have demonstrated excellence in their life of service and professional accomplishments.

**Goal:** Select qualified recipient for each category

### AWARDS

#### **Outstanding Alumnus of the Year Award**

**Professional Excellence Award** – College of Arts and Science

**Professional Excellence Award** – School of Business

**Professional Excellence Award** – School of Education

#### **Young Leader Award**

Each year the Southern Wesleyan University Alumni Association grants special awards in order to encourage and recognize alumni in their efforts to advance in their occupation and relationship with Christ. These awards honor those who embody Christian values and who strive to become the person Christ intended them to be in their work and personal life. We encourage the alumni to nominate someone they feel exemplifies the values and qualities that Southern Wesleyan University upholds.

#### **Outstanding Alumnus**

The Outstanding Alumnus Award is selected on the basis of the broadest aspects of service in the areas of humanity, community, and Southern Wesleyan University, as well as achievement in the recipient's chosen vocation. All former students of Southern Wesleyan University who have received academic credit are eligible.

#### **Professional Excellence**

The purpose of the Professional Excellence Awards is to recognize alumni who have made outstanding contributions to their profession and community and who have achieved honor and distinction for Southern Wesleyan University. All Southern Wesleyan University alumni who have received academic credit are eligible. However, only those who have been established professionally for at least five years can be considered. The recipient must also hold membership in at least one professional organization and must have been recognized by an organization for his or her accomplishments, achievements, or contributions. Awards are considered for each of the following areas: School of Education, School of Business, and College of Arts and Science.

#### **Young Leader**

The purpose of the Young Leader Award is to recognize alumni who are outstanding leaders in their vocation and community, and show promise of future professional growth. They should also provide service to Southern Wesleyan University and exemplify Christian values. All former Southern Wesleyan University alumni who have received academic credit are eligible. However, the recipient must be 39 years of age or younger.



## 2009-2010 Progress Update: Awards Committee

Goal: Select qualified recipient for each category

Strategies: Awards for each category	Dates	Results
<b>Outstanding Alumnus of the Year Award</b>	April 17, 2010	Bradford Fipps
<b>Professional Excellence Award – College of Arts and Science</b>	April 17, 2010	James Hilson
<b>Professional Excellence Award – School of Business</b>	April 17, 2010	John Benson Charles Tegen
<b>Professional Excellence Award – School of Education</b>	April 17, 2010	Karen Watts
<b>Young Leader Award</b>	April 17, 2010	Gregory Edmonds Rupal Shah
<p><b>Summary:</b>            Goal was met to have at least one recipient for each alumni award. The Southern Wesleyan University Alumni Association recognized alumni who are outstanding in their efforts to advance in their occupation and relationship with Christ. All awardees were present to receive their award. Each was recognized during the annual alumni awards program that was held as a luncheon instead of dinner. The date and time was moved away from graduation weekend and the response was well received. The attendance was down by only one compared to 2009. 2009 attendance was 134; 2010 attendance was 133. This event will continue to be hosted and will be scheduled again for April 2011 as a luncheon. This event also recognizes the demise of SWU alumni from previous year. The Association was informed of 18 alumni that passed in 2009-2010. Recommendation of a 5x7 postcard notification to be mailed highlighting names of those to be given an award. Budget permitting, a separate mailer/invitation will be sent to all alumni. Budget constraints will limit the invitation to the FOCUS magazine, Website, Facebook and Twitter.</p>		

## 2010-2011 Project Goals: Awards Committee

Goal: Select qualified recipient for each award category and recognize through a memorial service the demise of SWU alumni that pass during the previous year.

Strategies: Awards for each category.	Dates	Desired Results
<b>Outstanding Alumnus of the Year Award</b>	April 16, 2011	Qualified recipient
<b>Professional Excellence Award – College of Arts and Science</b>	April 16, 2011	Qualified recipient
<b>Professional Excellence Award – School of Business</b>	April 16, 2011	Qualified recipient
<b>Professional Excellence Award – School of Education</b>	April 16, 2011	Qualified recipient
<b>Young Leader Award</b>	April 16, 2011	Qualified recipient
<b>Annual Memorial Recognition</b>	To be held as part of the annual awards	

## Development Committee

**Purpose:** Promoting any and all programs that deal with development, being responsible for Alumni projects that have a defined completion date.

### Goals:

- Brick Campaign: This committee's responsibility is to raise funds from SWU alumni, promoting the purchase of bricks with alumni name and class year engraved.
- Athletic Campaign for the Southern Wesleyan University Wellness Center: This facility will support growth in both the athletic and recreational needs of the students, and provide a venue for community events. The structure will be located on the northwest corner of Clayton and Wesleyan Drive. It will include adjacent outdoor athletic fields. It is a 42,625 square-foot building with seating for 1,500 spectators in the bleachers and seating for 2,500 for special events. The University Center includes a regulation basketball floor and volleyball playing surface, a four-lane indoor track, a fitness center, locker rooms, faculty and coaching offices, classroom space and lobby, ticket booth and restroom facilities.
- Promote Warrior Club membership and alumni giving for athletic scholarships.
- Web Communication: Complete an annual evaluation of the alumni pages of the Southern Wesleyan University Web site and make recommendations that will be passed along to the university webmaster. This effort will assist in moving the alumni association into a more online community. Annual evaluation of the use of My Campus will also prove to be an attempt to keep the alumni informed of their classmates, university news and personal giving history. Specifically, move the bookstore link to a more prominent location on the Web site. Study the possibility of expanding the bookstore services.
- Chapel Organ campaign: the University will need an additional \$25,000 to complete the project.



## 2009-2010 Progress Update: Development Committee

Goal: Increase funding for projects

Strategies	Proposed Dates	Desired Results	Actual Results
<b>Brick Campaign: @ \$250 each</b>	December and May	12 bricks per year; 6 per graduation.	No campaign material was developed to support this goal.
<b>Athletic Campaign for the Southern Wesleyan University Wellness Center:</b> Will recruit two alumni for the Athletic Campaign for the University Wellness Center.	TBA	Have minimum of two SWU alumni on the steering committee.	Steering committee has not been organized as of July 2010.
<b>Online Giving</b>	Increase the use of web giving	Simplify the process to increase the giving by 2 percent	Little to no progress has been made on the simplification of online giving.
<b>Chapel Organ</b>	During 2009-2010	Assist Development with raising \$75,000	Letters, public presentation, and special requests for donations assisted the Development office in raising over \$47,000.
<b>Patio Furniture</b>	By summer 2010	Furnish Welcome Center with patio furniture	\$500 was raised to purchase two tables, 6 chairs, and a glider for the Clayton Welcome Center.
<b>Web communications</b>	By summer 2010	Obtain estimate of cost for hardware/software needed for mass communication efforts with SWU alumni	Information Technology invested \$1,000 at each location for hardware that will allow for video conferencing of the Alumni Board across the state. This equipment benefits the faculty and others that interact regularly with faculty, staff, students and alumni across the state.
<b>Summary:</b> Goals varied by categories. Due to budget constraints no new marketing material was developed for Brick Campaign, selections for a steering committee for the SWU Wellness Center has been placed on hold until the economy begins to bounce back. Discussions continue with various departments on the need to simplify the online giving process. No increase reported on the on-line giving tool. Funds raised for the organ did not meet the total goal. This project will continue for one more year. 100 percent of the funds needed for the patio furniture was raised by May 2010.			

## 2010-2011 Project Goals: Development Committee

Goal: Increase funding for projects

Strategies	Proposed Dates	Desired Results
<b>Brick Campaign:</b>	December and May place emphasis on the purchase of bricks as graduation draws near.	To develop a marketing plan for this campaign and reduce the cost of bricks to \$100.
<b>Athletic Campaign for the Southern Wesleyan University Wellness Center:</b> Will recruit two alumni for the Athletic Campaign for the University Wellness Center.	TBA	Have minimum of two SWU alumni on the steering committee.
<b>Online Giving</b>	Increase the use of web giving	Simplify the process to increase the giving by 2 percent.
<b>Chapel Organ</b>	During 2010-2011	Assist Development with raising an additional \$25,000 to complete this project.

## GRADUATION COMMITTEE

**Purpose:** To establish and build relationships with our new alumni as soon as possible as they near graduation. To allow new alumni to have a better understanding of their role to Southern Wesleyan University as an alumnus through organized events.

### 2009-2010 Progress Update: Graduation Committee

**Goal:** To organize a special event before each graduation for the graduates and their families. Utilize the National Alumni Board members to be greeters and servers for these gatherings. This meets the requirement for one of the alumni office goals within the SWU Strategic Plan (Stewardship through Advancement), "Alumni board and regional leadership will schedule a minimum of one annual alumni-coordinated gathering in each region, at-large determined locations, and at each regional AGS learning center."

<b>Strategy:</b> Create special events for the traditional graduates and move AGS receptions to the regional learning centers.		
<b>Actual Dates</b>	<b>Actual Results</b>	
Charleston	Oct/Nov 2009 April/May 2010	Did not meet the desired goal to give 50% of those graduating an alumni pin, And have at least 2 alumni board members attend.
Greenville/Spartanburg/Greenwood	Oct/Nov 2009 April/May 2010	Did not meet the desired goal to give 50% of those graduating an alumni pin, And have at least 2 alumni board members attend.
North Augusta	Oct/Nov 2009 April/May 2010	Did not meet the desired goal to give 50% of those graduating an alumni pin, And have at least 2 alumni board members attend.
Columbia	Oct/Nov 2009 April/May 2010	Did not meet the desired goal to give 50% of those graduating an alumni pin, And have at least 2 alumni board members attend.
Central (AGS)	Oct/Nov 2009 April/May 2010	Did not meet the desired goal to give 50% of those graduating an alumni pin, And have at least 2 alumni board members attend.
Central (Traditional)	Oct/Nov 2009 April/May 2010	Did not meet the desired goal to give 50% of those graduating an alumni pin, And have at least 2 alumni board members attend.
Alumni Awareness Week	Fall 2009 Spring 2010	Efforts were made to increase the awareness of the definition of being SWU alumni so that more than 50% of the student body will recognize that they are alumni after 12 credit hours on their SWU transcript. No tool in place to measure the outcome of the SWU Awareness Week.
<p><b>Summary:</b> Alumni Awareness Week was held in the fall using students to "pass the word." Recommend an assessment tool to measure the effectiveness of such an awareness week. One page flyer has been developed for the next phase of awareness. It is recommended that this flyer be sent via e-mail when students reach the 12 hours mark in their class load. 100 percent of graduation events planned occurred and remained in budget participation is noted in the list below. Recommend if these events continue staff will need to track undergraduate, graduate, traditional, and non-traditional alumni. Personal observation note is that students attending in Central and Greenville tend to be less likely to attend these receptions. Additional data and or survey may be helpful to assess more accurately the desires of these students.</p> <p><b>December 2009</b> Total number of graduates invited to receptions 360 with 140 total graduates attending one of five events, 38 percent of the graduates attended, with a budget of \$2000.</p> <p>Dec. 8            AGS CE- 53    Number of Graduates in attendance for reception 12 (07%)</p> <p>Nov. 10           AGS CH- 40    Number of Graduates in attendance for reception 16 (40%)</p> <p>Nov. 16           AGS CO- 39    Number of Graduates in attendance for reception 28 (71%)</p> <p>Nov. 12           AGS GR- 70    Number of Graduates in attendance for reception 35 (50%)</p> <p>Nov. 17           AGS NA- 54    Number of Graduates in attendance for reception 49 (90%)</p> <p>Dec. 8            TRAD. MC- 104    Number of Graduates in attendance for reception NA (combined with AGS-CE)</p> <p>Overall attendance at each location for fall 2009 was between 50-110 total guests. The percentage totals listed above relate only to student participation and does not include guest. Alumni Board members were present three of the five events 60% of the time.</p> <p><b>May 2010</b> Total number of graduates invited to receptions 502 with 77 graduates attending one of five events, 15% of the graduates attended, with a budget of \$2000</p> <p>May 4            AGS CE- 47    Number of Graduates in attendance for reception 23 (26%)</p> <p>April 12           AGS CH- 39    Number of Graduates in attendance for reception 18 (46%)</p> <p>April 22           AGS CO- 91    Number of Graduates in attendance for reception 17 (18%)</p> <p>April 15           AGS GR- 192    Number of Graduates in attendance for reception 07 (03%)</p> <p>April 19           AGS NA- 92    Number of Graduates in attendance for reception 12 (13%)</p> <p>May 4            TRAD. MC- 41    Number of Graduates in attendance for reception NA (combined with AGS-CE)</p> <p>Overall attendance at each location for spring 2010 was between 40-75 total guests. The totals listed above relate only to student participation. Alumni Board members were present four of the five events 80 percent of the time. Will discuss the value of these events with University Administration to determine if this use of budget is viable to alumni relations.</p>		

## 2010-2011 Project Goals: GRADUATION COMMITTEE

**Goal:** Annually organize an Alumni Awareness Week and organize a special event before each graduation for the graduates and their families. Utilize the National Alumni Board members to be greeters and servers for these gatherings. This meets the requirement for one of the alumni office goals within the SWU Strategic Plan (Stewardship through Advancement), "Alumni board and regional leadership will schedule a minimum of one annual alumni-coordinated gathering in each region, at-large determined locations, and at each regional AGS learning center."

<b>Strategy:</b> Create special events for the traditional graduate and move AGS receptions to the regional learning centers.	<b>Proposed Dates</b>	<b>Desired Results</b>
Charleston	Oct/Nov 2010 April/May 2011	To give 25% of those graduating an alumni pin. Have at least 2 alumni board members attend.
Greenville/Spartanburg/Greenwood	Oct/Nov 2010 April/May 2011	To give 25% of those graduating an alumni pin. Have at least 2 alumni board members attend.
North Augusta	Oct/Nov 2010 April/May 2011	To give 25% of those graduating an alumni pin. Have at least 2 alumni board members attend.
Columbia	Oct/Nov 2010 April/May 2011	To give 25% of those graduating an alumni pin. Have at least 2 alumni board members attend.
Central (AGS)	Oct/Nov 2010 April/May 2011	To give 25% of those graduating an alumni pin. Have at least 2 alumni board members attend.
Central (Traditional)	Oct/Nov 2010 April/May 2011	To give 25% of those graduating an alumni pin. Have at least 2 alumni board members attend.
Alumni Awareness Week	Fall 2010 Spring 2011	Increase the awareness of the definition of being SWU alumni so that more than 50% of the student body will recognize that they are an alumnus using the definition given by US News and World Report.



## SPECIAL EVENTS COMMITTEE

**Purpose:** To involve more alumni in an effort to connect and re-connect SWU alumni.

**Goal:** To increase constituent participation at alumni-sponsored and co-sponsored events

This meets the requirement for one of the alumni office goals within the SWU Strategic Plan (Stewardship Through Advancement), "Alumni board and regional leadership will schedule a minimum of one annual alumni-coordinated gathering in each region, at-large determined locations, and at each regional AGS learning center."

### 2009-2010 progress Update: Special Events Committee

Event/Project	Actual Results
Host two Best Years' Fellowship event(s) April and July	Maintain or increase attendance at both events. Met expectation with attendance of 110 at the April 20, 2010 BYF Luncheon held at 12:00 noon with theme of "Precious Memories" held at Southern Wesleyan University Dining Facility Guest Speaker: Morris Davis.
Host the annual Alumni Awards Banquet April 17, 2010	There was no significant increase or decrease in attendance over prior year, 133/134 The purpose of changing the event was to include the reunion; however, the multi-decade reunion was moved by committee action to be held in Fall 2010 along with Homecoming. Multi-decade reunion scheduled for April 16-17, 2010 moved to Sept. 24-25, 2010.
Host Homecoming September, 2009	Particular focus on attracting younger alumni while maintaining reunion groups (10, 20, 30, 40, 50, 50+ reunions). Tracking attendance at selected events. Homecoming Chapel will be coordinated through university chaplain. Though weather was "very wet" this was great for the theme "Splish Splash" .
Family Camp July 2010	SWU welcome tent At least one representative from each of the last five decades Board of Trustees and Alumni Board representation Admissions presentation during service SWU alumni served as ushers Track attendance at SWU evening service
District Conference July 2010	Provide all representatives from S.C. Wesleyan churches with information about the university. President's report was given to 100 percent of all delegates and pastors at each district conference.
S.C. Wesleyan Women Annual Convention July 2010	Participation by local churches will maintain or exceed prior year. The event will be moved to Friday night due to district conference schedule change. (Track the attitude of this change being that it is moved to Friday and to the evening). If attendance is down the second option for change is moving the event three weeks earlier to a Saturday.
S.C. Wesleyan Women Annual Retreat April 9-11, 2010	Goal not met for participation by local churches to maintain or exceed prior year with special speaker being Dr. JoAnn Lyon. Speaker was unable to attend and Heather Wilson filled in. The goal to maintain or exceed average satisfaction score of prior year exceeded expectations for all areas except one: facilities at Spring Maid Retreat and Conference Center. Attendance was down again with satisfaction surveys reporting facilities as being a major problem, More than 40% of attendees were disappointed in rooms. Committee reviewed needs with Conference Center, but no solution was offered. Retreat will move venues as of Spring 2011.
Alumni Gatherings "Come get the Scoop"	At least one gathering in each of the seven geographic areas. Will use targeted ice cream shops to promote this campaign in the targeted locations. ALL PLANNING FOR THESE EVENTS WAS PUT ON HOLD DUE TO BUDGET LOCKDOWN IN SPRING OF 2010 Only one event was held on July 15 at Aunt Sue's Ice Cream off Hwy 11, in S.C. Will attempt these event during the new budget year.
Connect and Re-connect Multi-Decade Reunion	April 16-17, 2010 will host a multi-decade reunion with the desired results to include members from at least five decades. (50-00's) EVENT MOVED TO FALL HOMECOMING SEPTEMBER 24-25, 2010
CWC/SWU Gathering	July 2009 attend the gathering of High School and Jr. College alumni to be held at Collins Ole Towne. Support the reunion coordinator David Funderburk. Event was very good with estimated 50+ in attendance.
Summary: Varied results of each event. Church relations' events had equal or greater attendance compared to last year. Homecoming events were monitored with equal or greater attendance to chapel, lunch, and sporting events. Increase in current student participation and children participation. SCWW Retreat numbers were slightly down and surveys show dissatisfaction of location. Plans to move venues for 2011 are in process. Budget held up the plans for geographic gatherings for alumni; however, this is a mandate from Administration and will take resource priority for 2010-2011 year.	

## 2010-2011 Project Goals: SPECIAL EVENTS COMMITTEE

**Goal:** To increase constituent participation at alumni-sponsored and co-sponsored events.

This meets the requirement for one of the alumni office goals within the SWU Strategic Plan (Stewardship Through Advancement), "Alumni board and regional leadership will schedule a minimum of one annual alumni-coordinated gathering in each region, at-large determined locations, and at each regional AGS learning center."

Event/Project	Desired Results
Alumni/Church Relations: Host two Best Years' Fellowship event(s) April 2010	Maintain or increase attendance for events and work with the new director of BYF.
Alumni/Church Relations: Family Camp July 2010	SWU welcome tent will be used on Thursday of Family Camp Target to have in attendance at least one representative from each of the last five decades, Board of Trustees members and National Alumni Board representation. University greetings to be presented during service. SWU alumni to serve as ushers Track attendance of those attending reception at SWU evening service
Alumni/Church Relations: District Conference July 2010	Provide all representatives from S.C. Wesleyan churches with information about the university.
Alumni/Church Relations: S.C. Wesleyan Women Annual Convention July 2011	Participation by local churches will maintain or exceed prior year. The event will be moved to Friday night due to district conference schedule change. (Track the attitude of this change being that it is moved to Friday and to the evening). If attendance is down, the second option for change is moving the event three weeks earlier to a Saturday.
Alumni/Church Relations: S.C. Wesleyan Women Annual Retreat April 2011	Maintain or exceed average satisfaction score of prior year.
Alumni Gatherings "Come get the Scoop"	At least one gathering in each of the seven geographic areas. Will use targeted ice cream shop to promote this campaign in the targeted locations.
Homecoming Connect and Reconnect Multi-Decade Reunion	September 24-25, 2010: Will host a multi-decade reunion with the desired results to include members from at least five decades. (50-00's)
CWC/SWU Gathering	July 24, 2010: Attend the gathering of High School and Jr. College alumni to be held at Collins Ole Towne. Support the reunion coordinator David Funderburk.



## Mentor Committee

### Purpose:

This group will give aid to current students and alumni through the use of alumni professionals to assist in the development of career services, job mentoring, preparation, employment interviews, business etiquette, business attire and more.

The Career Services Office was established in fall of 2007 and has done a magnificent job of getting connected with students. With the help of alumni in a variety of business fields, this will be a great asset to students to better prepare them for being marketable. The director of Career Services will receive a master list of alumni board members' e-mail addresses to make contact as needed. When necessary, other alumni from specific disciplines will be contacted as resources to meet the overall goals of the mentor committee.

### Goal:

Career Services may involve alumni leaders in mock interviews, host seminars and participate in job fairs. These and other efforts will be made to support the betterment of Southern Wesleyan University's students and to have each one prepared for facing the interview process with the primary goal of each student being employed within six months following graduation.



## 2009-2010 Progress Update: Mentor Committee

**Goal:** Provide opportunities where students can learn or enhance skills that will better prepare them for employment or promotion.

Strategies	Desired Results
Partner with SWU office of Career Services to update and add to the database with alumni leaders	Goal is to have 50 alumni leaders in the database. (Met expectations)
Partner with SWU office of Career Services mock interviews	Minimum of one workshop of mock interview with alumni leaders. Support the use of computerized mock interviews. (Met expectations)
Partner with SWU office of Career Services hosting seminars or career panels	Minimum of one week of emphasis of career panel discussion. (Met Expectations). Two free workshops were hosted at regional locations with Career Services director facilitating the workshop.
Partner with SWU office of Career Services to participate in job fairs.	Advertise job fair and assist with appropriate dress as resources are available. (Pending program structure for providing appropriate dress)
Plan and host with SWU office of Career Services a Business Etiquette Dinner.	Goal is to have 10 members of the Alumni Board to assist with hosting tables during the etiquette dinner. (Met expectations )

## 2010-2011 Project Goals: Mentor Committee

**Goal:** Provide opportunities where students can learn or enhance skills that will better prepare them for employment or promotion.

Strategies	Proposed Dates	Desired Results
Partner with SWU office of Career Services to update and add to the database with alumni leaders	Spring 2011	Maintain or increase the total number of alumni leaders available for networking.
Partner with SWU office of Career Services mock interviews	Spring 2011	Minimum of one workshop of mock interview with alumni leaders. Support the use of computerized mock interviews.
Partner with SWU office of Career Services hosting seminars or career panels	Spring 2011	One week of emphasis of career panel discussion or workshops at all SWU learning centers.
Partner with SWU office of Career Services to participate in job fairs.	Spring 2011	Advertise job fair and assist with appropriate dress as resources are available.
Plan and host with SWU office of Career Services a Business Etiquette Dinner.	April 14, 2011	Goal is to have 10 members of the Alumni Board to assist with hosting tables during the etiquette dinner.
Plan resume workshops and or other career enhancements seminars.	Spring/Summer 2011	Increase the number of workshops by 1 from previous year.

## By-Laws

**Purpose:** To keep the by-laws updated with new changes.

All changes need to be voted on by the Association.

### 2009-2010 Progress Update: By-Laws

**Goal:** Keep by-laws updated, to accurately reflect the changes in the Association representation.

Strategy	Desired Results
Update the Program of Work to show the progress of each committee	Program of work documentation is clear and shows updates in each area in a measurable way.

### 2010-2011 Project Goals: By-Laws

**Goal:** Keep by-laws updated to accurately reflect the changes in the Association representation.

Strategy	Proposed Dates	Desired Results
Update the Program of Work to show the progress of each committee	Draft by May 2011 Printed document by September 2012	Documentation will be clear and will show updates in each area in a measurable way.
Update the By-Laws document	January 2011	Approval of update By-laws will be posted in the minute of February 2011

Columbia



Charleston



Greenville



North Augusta



Central

## Summary of Standing Committees

<b>ALUMNI RELATIONS COMMITTEE</b>	Janene Bryson (Chairperson) Joy Bryant Tracy Landrith Kathryn (Kathy) Linnenkohl Julie Kellett Todd Price Mark Thompson Lisa McKinney Roger Lambkin
<b>AWARDS COMMITTEE</b>	Sue Rickman (Chairperson) Billie Faye Harvey Tim Elrod Karen Watts Brian Swords
<b>DEVELOPMENT COMMITTEE</b>	Bob Nash (Chairperson) Lewis Edwards Rebecca Lester Cory Williams Osie Egbuniwe Sammy Stewart Cassandra Rice Kelley Norwine
<b>GRADUATION COMMITTEE</b>	Jennifer Potts (Chairperson) Teresa Thurmond Natalie Carey Danielle Hardy Kelley Norwine Joel Crawford
<b>SPECIAL EVENTS COMMITTEE</b>	Joy Bryant (Chairperson) Lisa Bryant Janet Green Janene Bryson Julie Kellett
<b>MENTOR COMMITTEE</b>	Michael Nunley (Chairperson) Karen Varnadoe Deborah Kelley Rhodes Priscilla Hammond Lisa Jenkins Winnie Molloseau Harold Reaves Cassandra Rice Karen Watts Brian Swords Joel Crawford
<b>BY-LAWS</b>	Darl Fowler (Chairperson) C.W. (Sonny) Lusk Bob Nash Todd Price Nancy Edwards

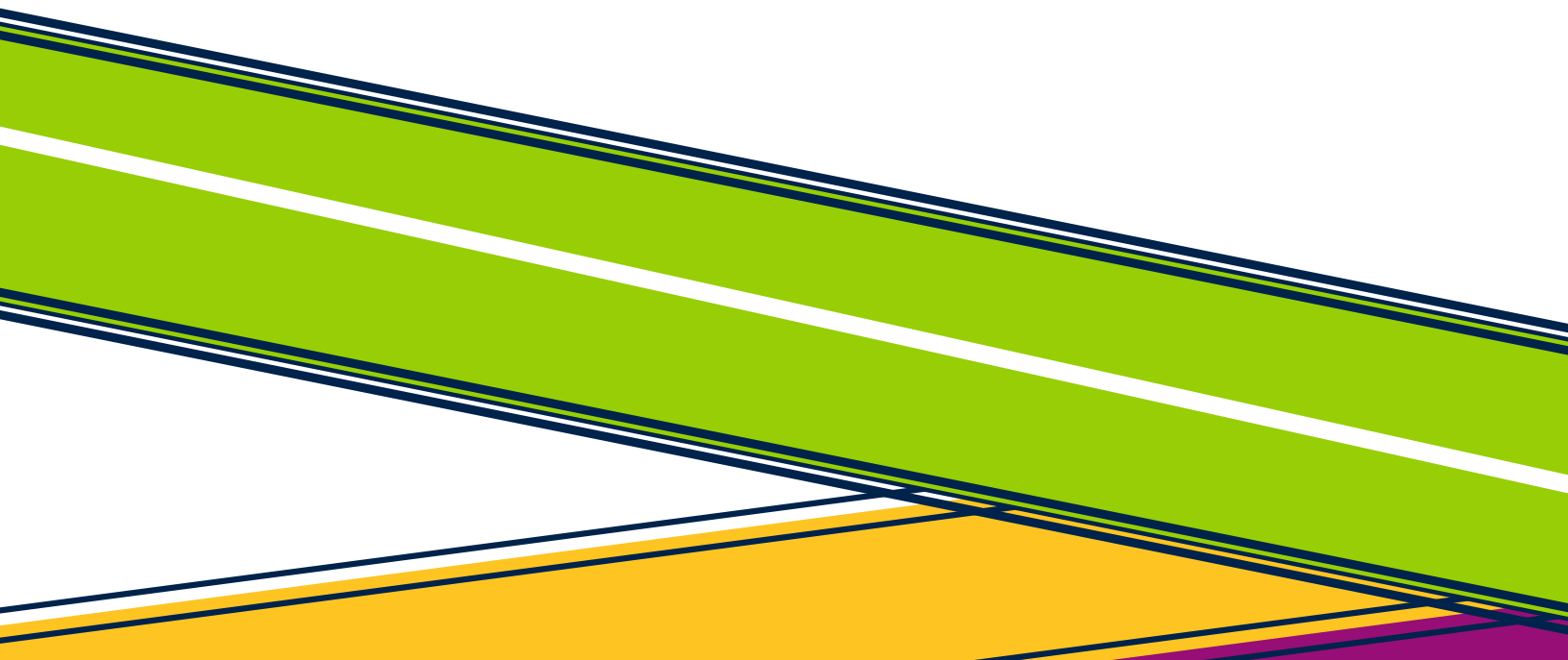
# NOTES



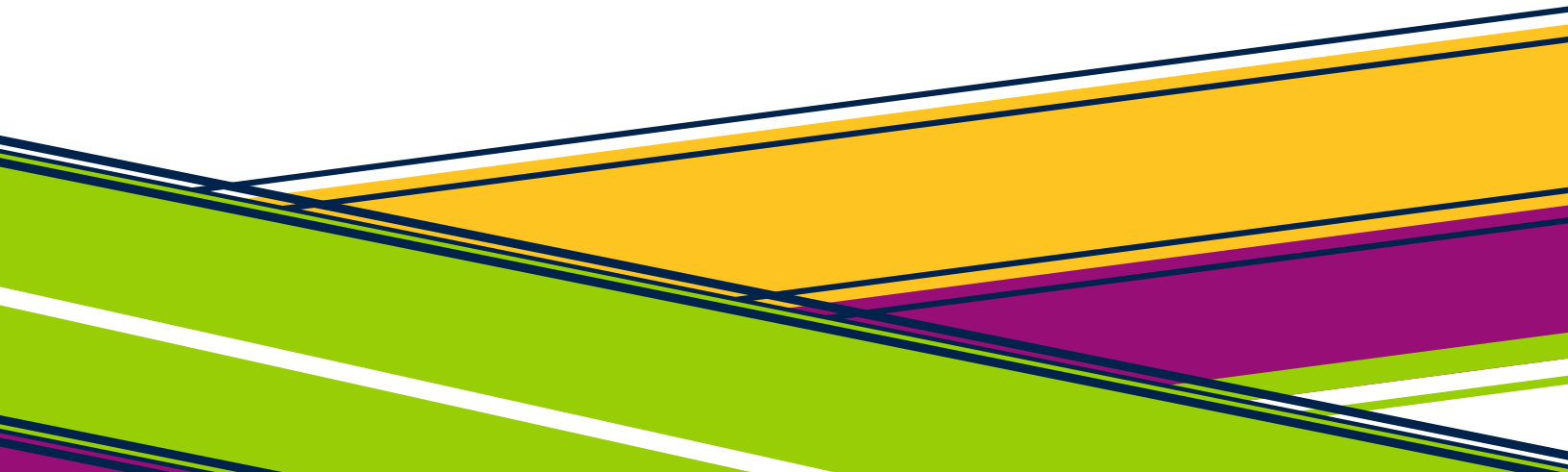
# NOTES



# NOTES



# NOTES



*Southern Wesleyan University  
Alumni Association  
P.O. Box 1020  
Central, South Carolina 29630  
[www.swu.edu](http://www.swu.edu)  
1-800-CU AT SWU*

**SOUTHERN  
WESLEYAN  
UNIVERSITY**

